



Charles Sturt
University

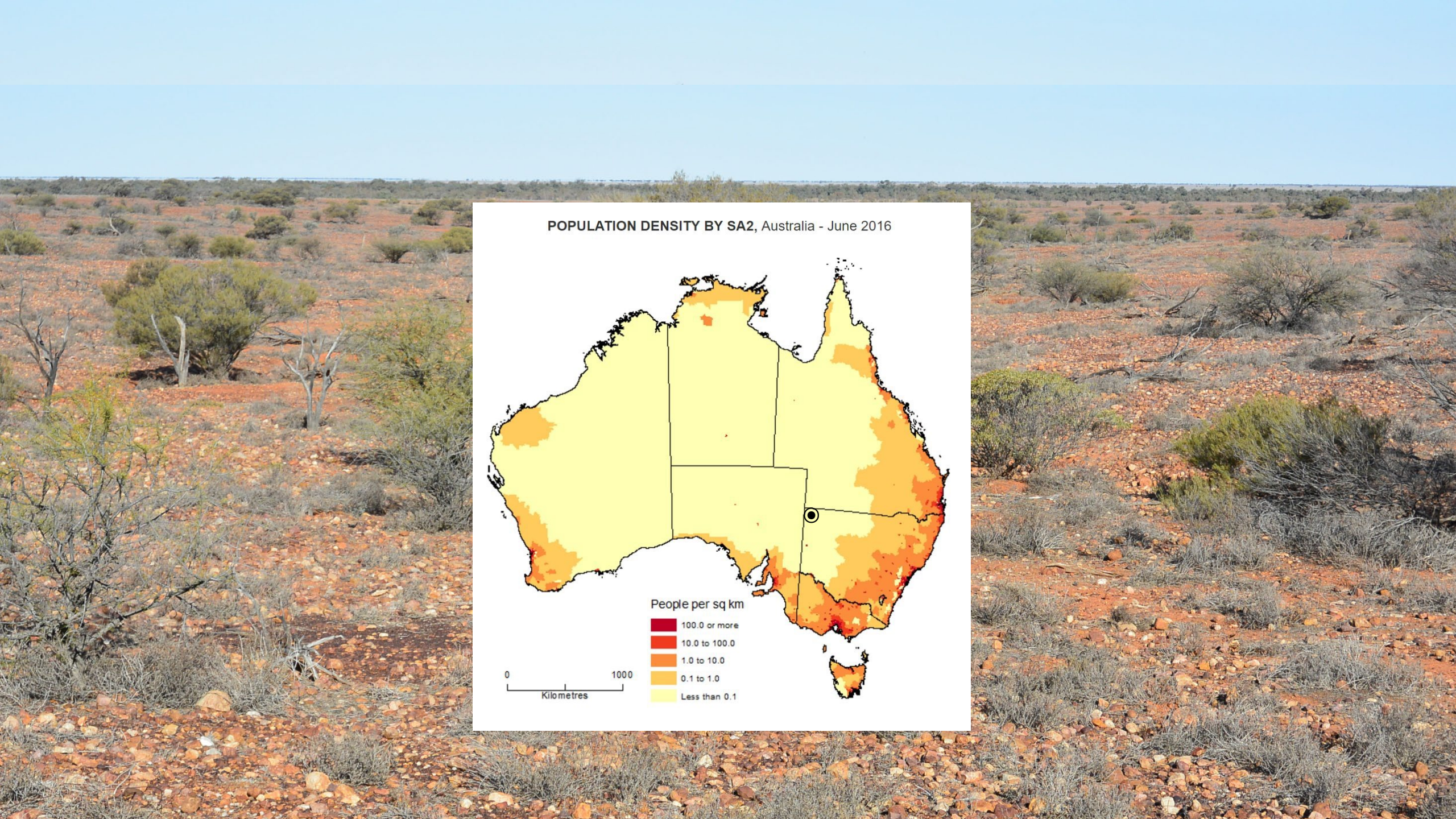
Taking the pulse of our planet:

Acoustics for monitoring biodiversity

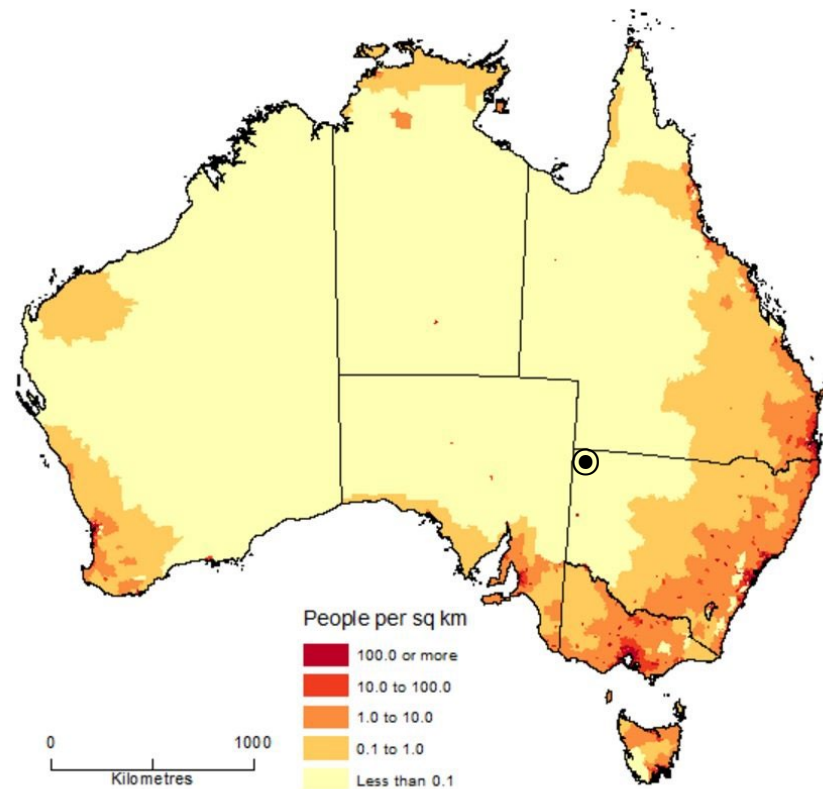
David M Watson

Professor of Ecology, Gulbali Institute

@D0CT0R_Dave



POPULATION DENSITY BY SA2, Australia - June 2016





360 sensors

1TB SD cards/sensor

90 sites

Stratified by ecoregion

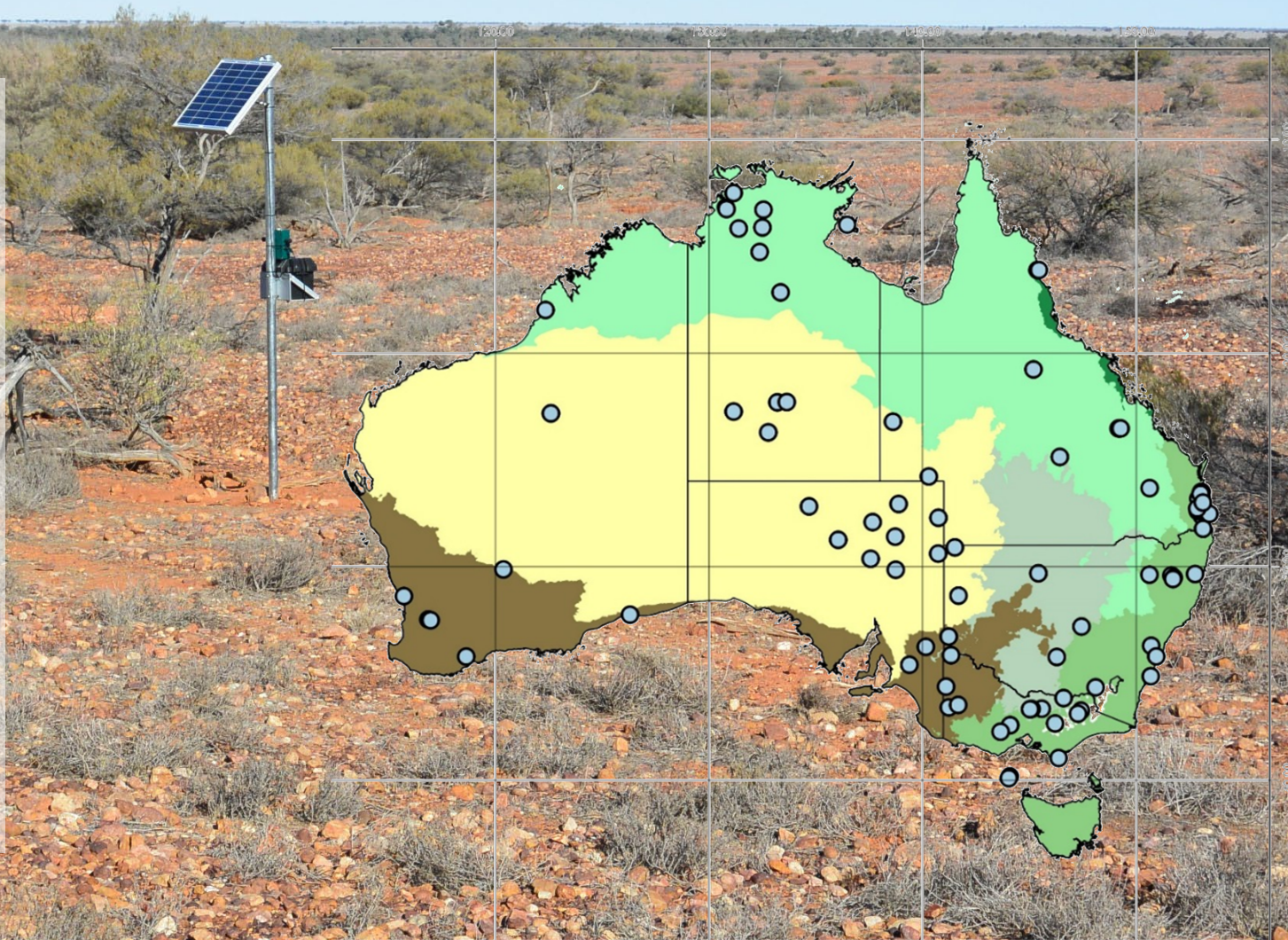
4 sensors per site

Stratified by productivity

2PB #openaccess data

cloud storage with Queensland
Cyber Infrastructure Foundation

> 2000 years continuous sound



Chief Investigators, A20

QUT

- Paul Roe
- Margot Brereton
- Stuart Parsons



UQ

- Richard Fuller
- Berndt Janse van Rensburg
- Martine Maron



CSU

- David Watson
- Dale Nimmo
- Gulbali post docs



UNE

- Paul McDonald



JCU

- Lin Schwarzkopf
- Marcus Sheaves



Partners

- BirdLife Australia
- Queensland Cyber Infrastructure Foundation Ltd.
- Google Deepmind



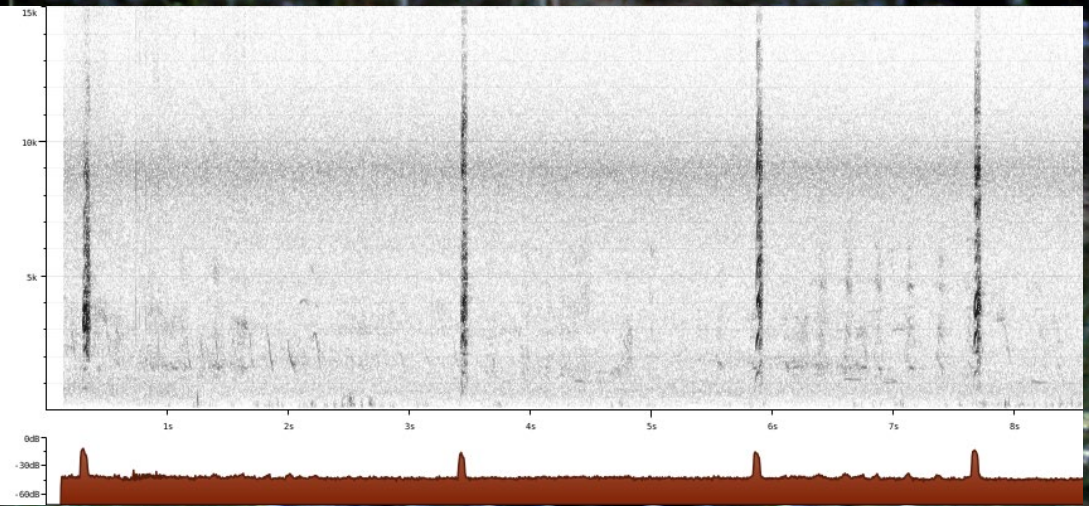
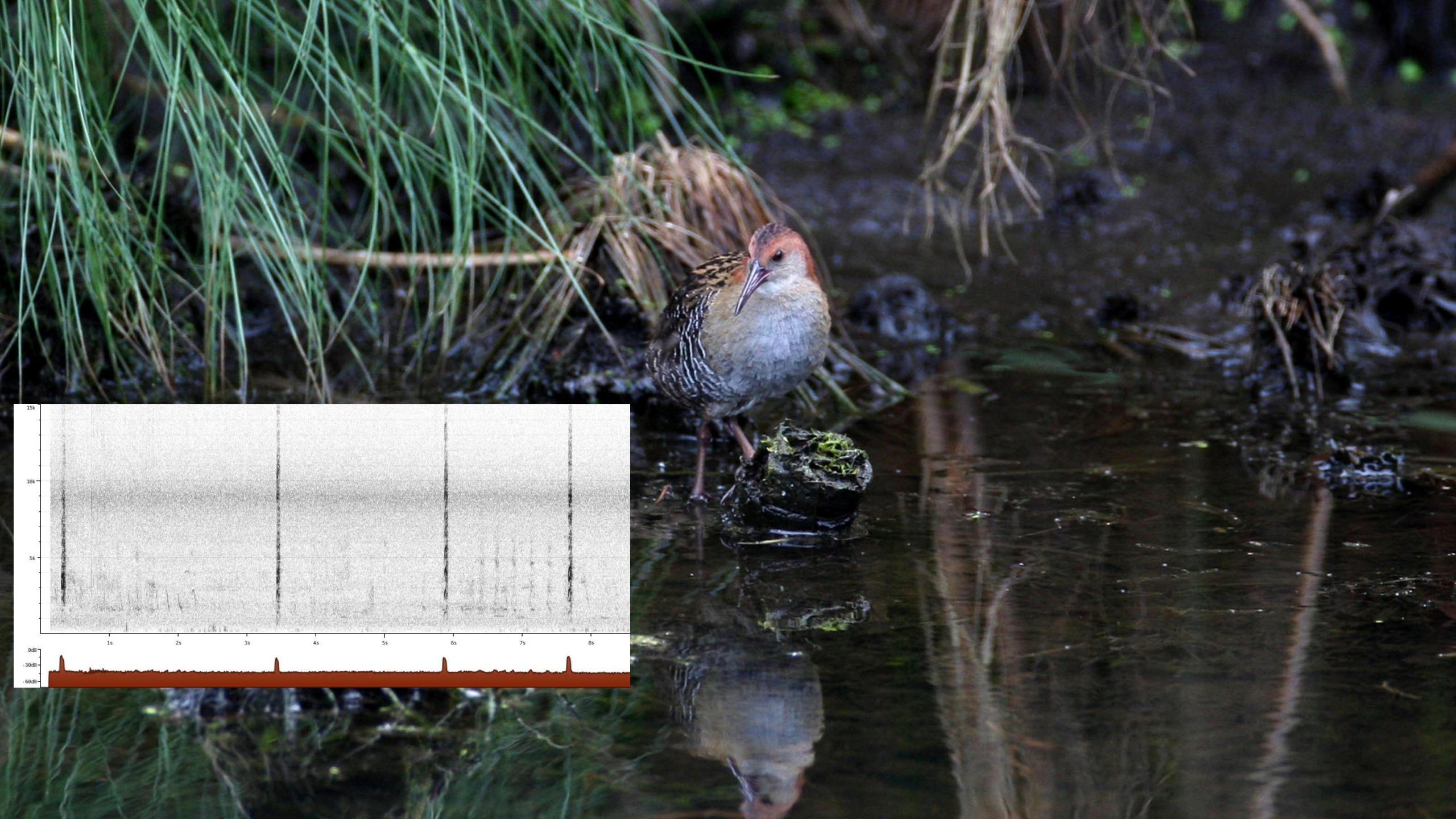
Australian Government

Australian Research Council



Australian
Acoustic
Observatory

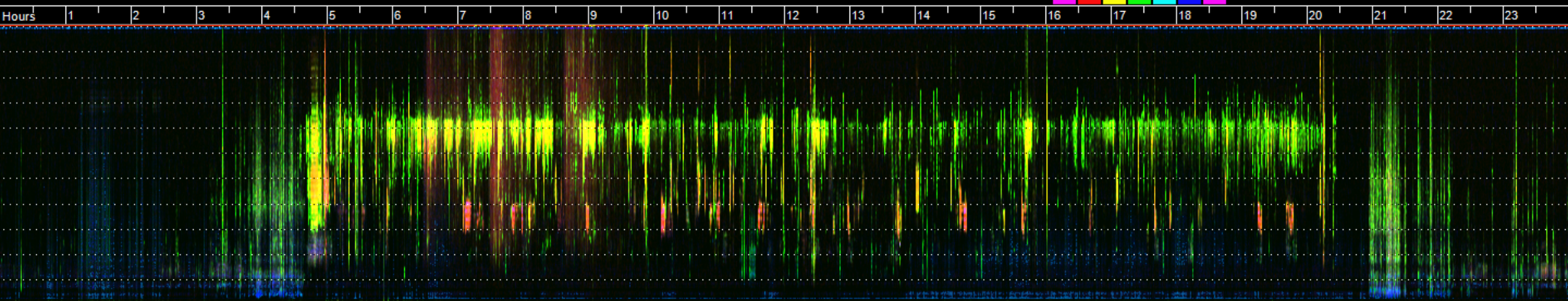




<ACIENT-RHZ> SPECTROGRAM of "LizZnidersic_TasmanIsU2Mez_20151114". Starts at 0016h; Nyquist=11025



SCALE:(time x kHz) (c) QUT.EDU.AU



<BGN-POW-SPT> SPECTROGRAM of "LizZnidersic_TasmanIsU2Mez_20151114". Starts at 0016h; Nyquist=11025



SCALE:(time x kHz) (c) QUT.EDU.AU



Australian
Acoustic
Observatory

11/2015 0100h 0200h 0300h 0400h 0500h 0600h 0700h 0800h 0900h 1000h 1100h 1200h 1300h 1400h 1500h 1600h 1700h 1800h 1900h 2000h 2100h 2200h 2300h 15

<ACIENT-RHZ> SPECTROGRAM of "LizZnidersic_TasmanIsU2Mez_20151114". Starts at 0016h; Nyquist=11025



SCALE:(time x kHz) (c) QUT.EDU.AU



<BGN-POW-SPT> SPECTROGRAM of "LizZnidersic_TasmanIsU2Mez_20151114". Starts at 0016h; Nyquist=11025



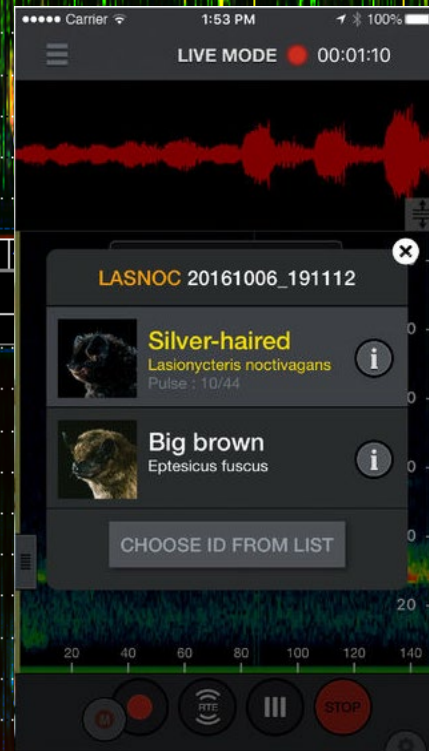
SCALE:(time x kHz) (c) QUT.EDU.AU



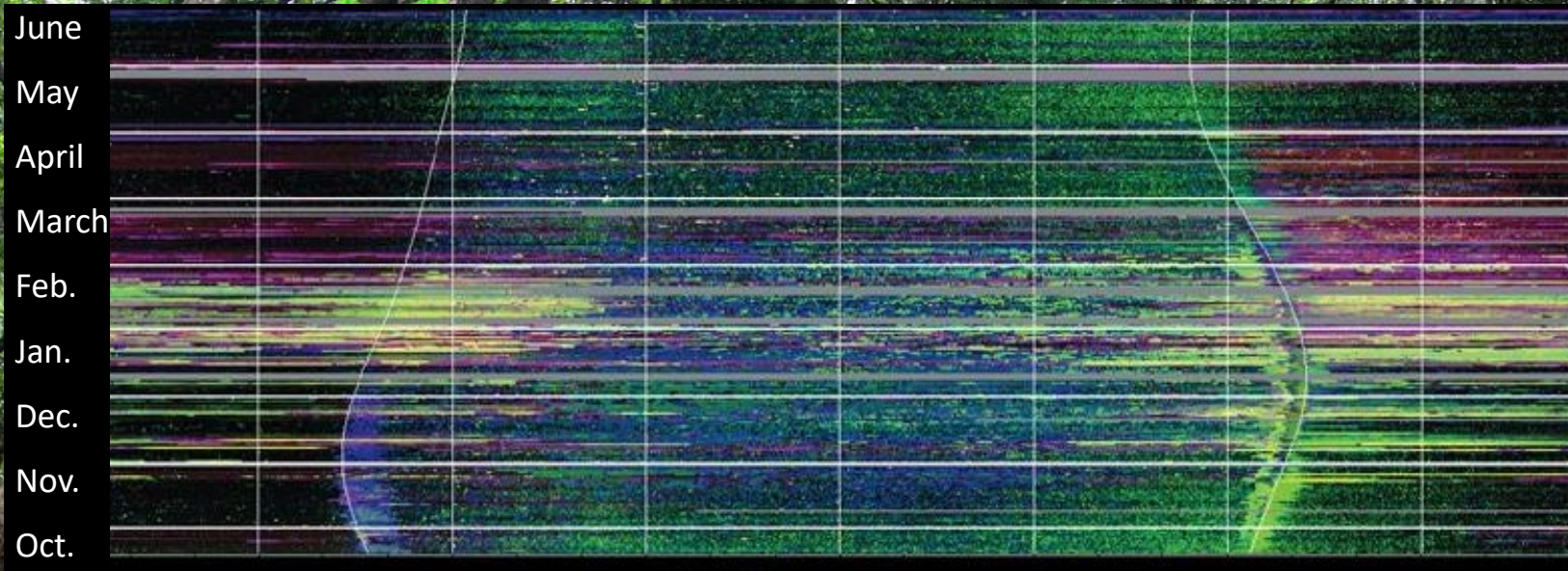
Australian
Acoustic
Observatory

<ACIENT-RHZ> SPECTROGRAM of "LizZnidersic_TasmanIsU2Mez_20151114". Starts at 0016h; Nyquist=11025

Hours 1 2 3 4 5 6 7 8 9 10 11 12 13 14 15 16 17 18 19



11/2015 0100h 0200h 0300h 0400h 0500h 0600h 0700h 0800h 0900h 1000h 1100h 1200h 1300h 1400h 1500h 1600h 1700h 1800h 1900h 2000h 2100h 2200h 2300h 15





A view of Earth from space, showing the Americas and city lights. The Earth is partially illuminated, with the sun creating a bright glow on the right side. The city lights are visible as a dense pattern of yellow and orange dots along the coastlines and inland areas.

Thank you for
listening

Gracias por
escuchar

Obrigado por
ouvir