

# Regional Universities Network

## Economic Impact of the Universities in the Regional Universities Network



## Introduction

The Regional Universities Network (RUN) is a network of six universities with headquarters in regional cities or towns in Australia. RUN was established in October 2011 with each member University playing a vital role in the development of their regional economies and communities<sup>1</sup>. The foundation members include:

- CQUniversity;
- Southern Cross University;
- University of Ballarat;
- University of New England;
- University of Southern Queensland; and
- University of the Sunshine Coast.

In October 2012, RUN commissioned a study to estimate the economic contribution of each University to its local region. This report outlines the impact of RUN and provides a summary of each of the individual Universities.

## Regional Universities Network

The members of RUN deliver higher educational programs across regional Australia, the nation and internationally to over 100,000 students each year, including over 45,000 students studying externally. The member Universities all have their headquarters in regional cities or towns and play a vital role in the development of their regional economies and communities. RUN Universities produce, retain and attract a broad range of qualified professionals that are needed for regional development and economic diversification and growth. They also ensure a steady supply of teachers, nurses, allied health professionals, social workers and environmental scientists to underpin essential services in our regions.<sup>2</sup> RUN trains over 2,200 higher degree by research candidates each year and conducts world standard research that matters to regional communities, across a range of fields, including: education; rural and remote health; sustainable business development; regional development; climate change adaptation; environment, plant and water sciences; agricultural and resource economics; geoscience; genetics and animal science.

The analysis only incorporates the impact of the campuses specified for each individual University and does not include the impacts of other campuses, overseas centres or any other operations of the Universities (e.g. innovation parks, vocational education and training operations). Perhaps more importantly, it excludes the University's contribution to encouraging people living in the region to undertake higher education. Consequently, the economic impact analysis contained in this report is an extremely conservative estimate of the impact of RUN on the economy. The impacts derived at the national level for the campuses examined is greater than the sum of the impacts on the relevant LGAs, as a result of expenditure made outside the LGA, but elsewhere in Australia, and the associated flow-on effects.

The impact of the individual University campus on the Gross Regional Product of the LGA, measured in percentage terms, should be examined in the context of the size of the LGA economy. If all campuses were the same size, it could reasonably be expected that the larger the local economy, the smaller the impact would be in percentage terms and vice versa.

Of the 14 LGAs examined, the combined Gold Coast Tweed LGAs have the largest GRP and, not surprisingly, the SCU campus there has the smallest percentage impact. Conversely, the economies of Lismore and Armidale-Dumaresq are amongst the smallest economies of the LGAs examined and the University campuses located in them have the largest impacts in percentage terms.

<sup>1</sup> [www.run.edu.au](http://www.run.edu.au) Accessed 15<sup>th</sup> November 2012

<sup>2</sup> [www.run.edu.au](http://www.run.edu.au) Accessed 15<sup>th</sup> November 2012

## Economic Impact

Obviously there are some variations resulting from the relative size of the campus. For example, the Sunshine Coast LGA has the second largest GRP of all LGAs examined but the USC campus does not have the second lowest impact, measured in percentage terms, as a result of its relatively high student numbers.

The impact is measured in terms of:

- Industry value added – the total value of turnover less the value of intermediate purchases. Industry value added measures the contribution of each industry sector to gross domestic or regional product. Total gross domestic or regional product is the sum of the industry value added for all industry sectors plus value added from final demand (household and government consumption expenditure, capital formation, exports and changes in inventories);
- Household income – primarily comprising wages and salaries;
- Employment – measured as full-time equivalent jobs, adopting the Australian Bureau of Statistics convention whereby one part-time job equates to 0.5 full-time job; and
- Output – total gross revenue. This element should be used with caution as it can include elements of double counting when the output of integrated industries is aggregated, as it includes the cost of inputs at each stage. Gross regional product (GRP) excludes the cost of intermediate inputs and is therefore a more appropriate measurement of economic contribution.

## Economic impact of RUN on the Australian economy

This section summarises the impact of RUN on the Australian economy. The result is provided as the total impact on Australia, as well as a breakdown of the individual components including:

- operations - the wages and salaries of staff as well as all other expenditure by RUN;
- expenditure by overseas students combined with visitor expenditure associated with graduation ceremonies; and
- any capital expenditure within Australia during the 2011 calendar year.

### Total Impact

The impact of RUN on the Australian economy is shown below.

	Output \$m	Income \$m	Value Added \$m	Employment FTE
Total	3,601.4	1,209.2	2,050.7	14,263
% of region	0.1%	0.2%	0.1%	0.2%

RUN contributes 0.1 per cent of gross domestic product, 0.2 per cent of household income and 0.2 per cent of FTE employment in Australia when flow-on effects are taken into account.

The main industry sectors impacted by RUN in terms of FTE employment are Retail Trade, Education & Training and Professional, Scientific & Technical Services.

Overall, RUN contributes the following to the Australian economy:

- \$2.1 billion in gross domestic product,
- \$1.2 billion in household income; and
- more than 14,000 FTE jobs.

The impact of the individual components of RUN on Australia is outlined in the table below.

	Output \$m	Income \$m	Value Added \$m	Employment FTE
Operations	3,175.1	1,104.9	1,847.1	12,924
Student Expenditure	80.4	21.9	42.3	305
Capital Expenditure	346.0	82.3	161.3	1,034

### Operations

The operations of RUN contribute \$1.8 billion in gross domestic product, \$1.1 billion in household income and almost 13,000 FTE jobs to the Australian economy.

The main industry sectors impacted by the operations of RUN in terms of flow-on FTE employment are Education & Training, Retail Trade and Professional, Scientific & Technical Services.

### Student Expenditure

Expenditure by students from RUN contributes \$42.3 million in gross domestic product, \$21.9 million in household income and 305 FTE jobs to the Australian economy.

The impact of student expenditure is relatively small as only expenditure by those students who had an overseas home address on enrolment has been included in assessing the impact on the Australian economy.

The main industry sectors impacted by student expenditure in terms of FTE employment are Retail Trade, Accommodation & Food Services and Other Services.

### Capital Expenditure

RUN capital expenditure contributes \$161.3 million in gross domestic product, \$82.3 million in household income and 1,034 FTE jobs to the Australian economy.

The main industry sectors impacted by investment by RUN in terms of FTE employment are Construction, Retail Trade and Professional, Scientific & Technical Services.

# Economic Impact

## Economic impact of RUN on their combined LGAs

This section summarises the impact of RUN on the combined economy of the LGAs in which RUN campuses are located. Note: this only includes the LGAs defined as part of this study. The result is provided as the total impact on the LGAs, as well as a breakdown of the individual components including:

- operations - the wages and salaries of staff as well as all other expenditure by RUN;
- expenditure by students combined with visitor expenditure associated with graduation ceremonies; and
- any capital expenditure within the LGA during the 2011 calendar year.

### Total Impact

The impact of RUN on the combined LGAs economy is shown below.

	Output \$m	Income \$m	Value Added \$m	Employment FTE
Total	2,774.8	968.2	1,670.1	12,393
% of region	1.8%	2.4%	1.8%	2.1%

RUN contributes 1.8 per cent of gross regional product, 2.4 per cent of household income and 2.1 per cent of FTE employment in the combined LGAs when flow-on effects are taken into account.

Overall, RUN contributes the following to the combined LGA's economy:

- \$1.7 billion in gross regional product,
- \$968 million in household income; and
- more than 12,000 FTE jobs.

The impact of the individual components of RUN on the combined LGAs is outlined in the table below.

	Output \$m	Income \$m	Value Added \$m	Employment FTE
Operations	2,276.8	856.6	1,421.7	10,564
Student Expenditure	334.2	79.2	174.3	1,340
Capital Expenditure	163.8	32.3	74.0	489

### Operations

The operations of RUN contribute \$1.4 billion in gross regional product, \$857 million in household income and over 10,500 FTE jobs to the combined LGA economy.

### Student Expenditure

Expenditure by students from RUN contributes \$174.3 million in gross regional product, \$79.2 million in household income and 1,340 FTE jobs to the combined LGA economy.

Note: This is significantly higher than for the RUN impact on the Australian economy as it includes domestic student expenditure, whereas the impact assessed for Australia only incorporates expenditure by students who had an overseas address on enrolment.

### Capital Expenditure

RUN capital expenditure contributes \$74.0 million in gross regional product, \$32.3 million in household income and 489 FTE jobs to the combined LGA economy.

## University of Ballarat

This summary outlines the impact of UB higher education on its local regions of Ballarat and Horsham LGAs. The analysis only incorporates the impact of the campuses located in Ballarat and Horsham. It does not include the impacts of other operations of the University including campuses in Ararat and Stawell, the TAFE division of UB and the UB Technology Park. Perhaps more importantly, it excludes the University's contribution to encouraging people living in the region to undertake higher education. Consequently, the economic impact analysis is an extremely conservative estimate of the impact of UB on the local economy.

### Ballarat Campus

The total impact of the Ballarat campus of UB on Ballarat LGA is outlined in the table below.

	Output \$m	Income \$m	Value Added \$m	Employment FTE
Total	358.8	108.1	210.2	1,402
% of region	4.4%	5.1%	4.5%	4.3%

UB contributes 4.5 per cent of gross regional product, 5.1 per cent of household income and 4.3 per cent of FTE employment in the Ballarat LGA when flow-on effects are taken into account.

The main industry sectors impacted by UB in Ballarat LGA in terms of FTE employment are Retail Trade, Health Care & Social Assistance and Accommodation & Food Services.

Overall, UB contributes the following to the Ballarat economy:

- \$210.2 million in gross regional product;
- \$108.1 million in household income; and
- 1,402 FTE jobs.

## Horsham Campus

The total impact of the Horsham campus of UB on Horsham LGA is outlined in the table below.

	Output \$m	Income \$m	Value Added \$m	Employment FTE
Total	5.1	1.4	3.0	18
% of region	0.3%	0.3%	0.3%	0.3%

UB contributes 0.3 per cent of gross regional product, 0.3 per cent of household income and 0.3 per cent of FTE employment in the Horsham LGA when flow-on effects are taken into account.

The main industry sectors impacted by UB in Horsham LGA in terms of FTE employment are Retail Trade, Health Care & Social Assistance and Other Services.

Overall, UB contributes the following to the Horsham economy:

- \$3.0 million in gross regional product,
- \$1.4 million in household income; and
- 18 FTE jobs.

# Economic Impact

## University of New England

This summary outlines the impact of UNE on the Armidale-Dumaresq LGA. The analysis only incorporates the impact of the campus located in Armidale. It does not include the impacts of other operations of the University including participation in a range of overseas projects and collaboration with a number of community bodies. Perhaps more importantly, it excludes the University's contribution to encouraging people living in the region to undertake higher education. Consequently, the economic impact analysis is an extremely conservative estimate of the impact of UNE on the local economy.

The total impact of UNE on the Armidale-Dumaresq LGA is outlined in the table below.

	Output \$m	Income \$m	Value Added \$m	Employment FTE
Total	446.9	155.0	282.7	1,977
% of region	23.1%	26.8%	22.6%	23.5%

UNE contributes 22.6 per cent of gross regional product, 26.8 per cent of household income and 23.5 per cent of FTE employment in the Armidale-Dumaresq LGA when flow-on effects are taken into account.

The main industry sectors impacted by UNE in Armidale-Dumaresq LGA in terms of FTE employment are Retail Trade, Health Care & Social Assistance and Accommodation & Food Services.

Overall, UNE contributes the following to the Armidale-Dumaresq economy:

- \$282.7 million in gross regional product;
- \$155 million in household income; and
- 1,977 FTE jobs.

## University of Sunshine Coast

This summary outlines the impact of USC on the Sunshine Coast LGA. The analysis only incorporates the impact of the campus located in Sippy Downs. It does not include the impacts of other operations of the University including the new site at Gympie, a study support centre in Noosa and a research facility on Fraser Island. Perhaps more importantly, it excludes the University's contribution to encouraging people living in the region to undertake higher education. Consequently, the economic impact analysis is an extremely conservative estimate of the impact of USC on the local economy.

The total impact of USC on the Sunshine Coast LGA is outlined in the table below.

	Output \$m	Income \$m	Value Added \$m	Employment FTE
Total	348.9	120.5	208.9	1,554
% of region	1.6%	2.1%	1.5%	1.8%

USC contributes 1.5 per cent of gross regional product, 2.1 per cent of household income and 1.8 per cent of FTE employment in the Sunshine Coast LGA when flow-on effects are taken into account.

The main industry sectors impacted by USC in terms of FTE employment are Accommodation & Food Services, Retail Trade and Other Services.

Overall, USC contributes the following to the Sunshine Coast economy:

- \$208.9 million in gross regional product;
- \$120.5 million in household income; and
- 1,554 FTE jobs.

# Regional Universities Network

## University of Southern Queensland

This summary outlines the impact of USQ on its local regions of Toowoomba, Ipswich and Fraser Coast LGAs. The analysis only incorporates the impact of the campuses located in Fraser Coast, Springfield and Toowoomba. It does not include the impacts of other operations of the University including overseas partnerships. Perhaps more importantly, it excludes the University's contribution to encouraging people living in the region to undertake higher education. Consequently, the economic impact analysis is an extremely conservative estimate of the impact of USQ on the local economy.

### USQ Toowoomba

The total impact of USQ Toowoomba on Toowoomba LGA is outlined in the table below.

	Output \$m	Income \$m	Value Added \$m	Employment FTE
Total	528.2	195.3	316.3	2,627
% of region	3.8%	5.6%	3.9%	5.1%

USQ Toowoomba contributes 3.9 per cent of gross regional product, 5.6 per cent of household income and 5.1 per cent of FTE employment in the Toowoomba LGA when flow-on effects are taken into account.

The main industry sectors impacted by USQ Toowoomba in Toowoomba LGA in terms of FTE employment are Retail Trade, Health Care & Social Assistance and Education & Training.

Overall, USQ Toowoomba contributes the following to the Toowoomba economy:

- \$316.3 million in gross regional product;
- \$195.3 million in household income; and
- 2,627 FTE jobs.

### USQ Springfield

The total impact of USQ Springfield on Ipswich LGA is outlined in the table below.

	Output \$m	Income \$m	Value Added \$m	Employment FTE
Total	43.5	15.4	26.1	206
% of region	0.3%	0.5%	0.4%	0.5%

USQ contributes 0.4 per cent of gross regional product, 0.5 per cent of household income and 0.5 per cent of FTE employment in the Ipswich LGA when flow-on effects are taken into account.

The main industry sectors impacted by USQ Springfield in Ipswich LGA in terms of FTE employment are Retail Trade, Accommodation & Food Services and Other Services.

Overall, USQ Springfield contributes the following to the Ipswich economy:

- \$26.1 million in gross regional product;
- \$15.4 million in household income; and
- 206 FTE jobs

### USQ Fraser Coast

The total impact of USQ Fraser Coast on Fraser Coast LGA is outlined in the table below.

	Output \$m	Income \$m	Value Added \$m	Employment FTE
Total	22.2	7.9	14.6	115
% of region	0.4%	0.6%	0.4%	0.5%

USQ Fraser Coast contributes 0.4 per cent of gross regional product, 0.6 per cent of household income and 0.5 per cent of FTE employment in the Fraser Coast LGA when flow-on effects are taken into account.

The main industry sectors impacted by USQ Fraser Coast in Fraser Coast LGA in terms of FTE employment are Retail Trade, Accommodation & Food Services and Health Care & Social Assistance.

Overall, USQ Fraser Coast contributes the following to the Fraser Coast economy:

- \$14.6 million in gross regional product;
- \$7.9 million in household income; and
- 115 FTE jobs.

# Economic Impact

## Southern Cross University

This summary outlines the impact of SCU on its local regions of Lismore, Coffs Harbour and the combined Gold Coast-Tweed LGAs and does not include the impacts of other operations of the University including The Hotel School, Sydney. Perhaps more importantly, it excludes the University's contribution to encouraging people living in the region to undertake higher education. Consequently, the economic impact analysis is an extremely conservative estimate of the impact of SCU on the local economy.

### Lismore Campus

The total impact of the Lismore campus of SCU on Lismore LGA is outlined in the table below.

	Output \$m	Income \$m	Value Added \$m	Employment FTE
Total	352.8	135.1	220.8	1,652
% of region	10.0%	13.1%	10.3%	10.6%

SCU contributes 10.3 per cent of gross regional product, 13.1 per cent of household income and 10.6 per cent of FTE employment in the Lismore LGA when flow-on effects are taken into account.

The main industry sectors impacted by SCU in Lismore LGA in terms of FTE employment are Health Care & Social Assistance, Retail Trade and Education & Training. Overall, SCU contributes the following to the Lismore economy:

- \$220.8 million in gross regional product;
- \$135.1 million in household income; and
- 1,652 FTE jobs.

It should be noted that Lismore is a relatively small LGA and has close links with the surrounding LGAs including Richmond Valley and Ballina, with many of the staff at the Lismore campus living regionally. The impact of flow-on effects in these surrounding LGAs is likely to be strong. However, the local gross regional product is generated by workers in an area, regardless of where they live, so the initial employment impact of all staff is measured as impacting on Lismore LGA.

### Coffs Harbour Campus

The total impact of the Coffs Harbour campus of SCU on Coffs Harbour LGA is outlined in the table below.

	Output \$m	Income \$m	Value Added \$m	Employment FTE
Total	63.5	23.0	36.1	303
% of region	1.3%	1.7%	1.2%	1.4%

SCU contributes 1.2 per cent of gross regional product, 1.7 per cent of household income and 1.4 per cent of FTE employment in the Coffs Harbour LGA when flow-on effects are taken into account.

The main industry sectors impacted by SCU in Coffs Harbour LGA in terms of FTE employment are Retail Trade, Health Care & Social Assistance and Accommodation & Food Services.

Overall, SCU contributes the following to the Coffs Harbour economy:

- \$36.1 million in gross regional product,
- \$23.0 million in household income; and
- 303 FTE jobs

### Gold Coast – Tweed Campus

The total impact of the Gold Coast-Tweed campus of SCU on the combined Gold Coast-Tweed LGAs is outlined in the table below.

	Output \$m	Income \$m	Value Added \$m	Employment FTE
Total	101.0	32.6	59.2	410
% of region	0.2%	0.3%	0.2%	0.2%

SCU contributes 0.2 per cent of gross regional product, 0.3 per cent of household income and 0.2 per cent of FTE employment in the combined Gold Coast-Tweed LGAs when flow-on effects are taken into account.

The main industry sectors impacted by SCU in the combined Gold Coast-Tweed LGAs in terms of FTE employment are Construction, Retail Trade and Accommodation & Food Services.

Overall, SCU contributes the following to the Gold Coast-Tweed economy:

- \$59.2 million in gross regional product,
- \$32.6 million in household income; and
- 410 FTE jobs.



# Regional Universities Network

## CQUniversity

This summary outlines the impact of CQUniversity on its local regions of Rockhampton, Gladstone, Mackay and Bundaberg LGAs. The analysis only incorporates the impact of these campuses and does not include the impacts of other operations of the University including three other regional campuses in Queensland, three metropolitan campuses on the eastern seaboard and the operations of a research facility in Adelaide. Perhaps more importantly, it excludes the University's contribution to encouraging people living in the region to undertake higher education. Consequently, the economic impact analysis is an extremely conservative estimate of the impact of CQUniversity on the local economy.

### Rockhampton Campus

The total impact of the Rockhampton campus of CQUniversity on Rockhampton LGA is outlined in the table below.

	Output \$m	Income \$m	Value Added \$m	Employment FTE
Total	394.9	138.3	229.5	1,700
% of region	4.1%	5.6%	4.0%	4.9%

CQUniversity contributes 4.0 per cent of gross regional product, 5.6 per cent of household income and 4.9 per cent of FTE employment in the Rockhampton LGA when flow-on effects are taken into account.

The main industry sectors impacted by CQUniversity in terms of FTE employment are Education & Training, Retail Trade and Accommodation & Food Services.

Overall, CQUniversity contributes the following to the Rockhampton LGA economy:

- \$229.5 million in gross regional product;
- \$138.3 million in household income; and
- 1,700 FTE jobs.

### Mackay Campus

The total impact of the Mackay campus of CQUniversity on Mackay LGA is outlined in the table below.

	Output \$m	Income \$m	Value Added \$m	Employment FTE
Total	46.5	14.6	27.7	172
% of region	0.4%	0.5%	0.4%	0.4%

CQUniversity contributes 0.4 per cent of gross regional product, 0.5 per cent of household income and 0.4 per cent of FTE employment in the Mackay LGA when flow-on effects are taken into account.

The main industry sectors impacted by CQUniversity in terms of FTE employment are Education & Training, Retail Trade and Accommodation & Food Services.

Overall, CQUniversity contributes the following to the Mackay LGA economy:

- \$27.7 million in gross regional product;
- \$14.6 million in household income; and
- 172 FTE jobs

### Gladstone Campus

The total impact of the Gladstone campus of CQUniversity on Gladstone LGA is outlined in the table below.

	Output \$m	Income \$m	Value Added \$m	Employment FTE
Total	30.1	9.6	15.9	108
% of region	0.3%	0.5%	0.4%	0.5%

CQUniversity contributes 0.4 per cent of gross regional product, 0.5 per cent of household income and 0.5 per cent of FTE employment in the Gladstone LGA when flow-on effects are taken into account.

The main industry sectors impacted by CQUniversity in terms of FTE employment are Education & Training, Retail Trade and Accommodation & Food Services.

Overall, CQUniversity contributes the following to the Gladstone LGA economy:

- \$15.9 million in gross regional product;
- \$9.6 million in household income; and
- 108 FTE jobs.

# Economic Impact

## Bundaberg Campus

The total impact of the Bundaberg campus of CQUniversity on Bundaberg LGA is outlined in the table below.

	Output \$m	Income \$m	Value Added \$m	Employment FTE
Total	32.5	11.4	19.0	150
% of region	0.5%	0.8%	0.5%	0.6%

CQUniversity contributes 0.5 per cent of gross regional product, 0.8 per cent of household income and 0.6 per cent of FTE employment in the Bundaberg LGA when flow-on effects are taken into account.

The main industry sectors impacted by CQUniversity in terms of FTE employment are Education & Training, Retail Trade and Accommodation & Food Services.

Overall, CQUniversity contributes the following to the Bundaberg LGA economy:

- \$19.0 million in gross regional product;
- \$11.6 million in household income; and
- 150 FTE jobs.

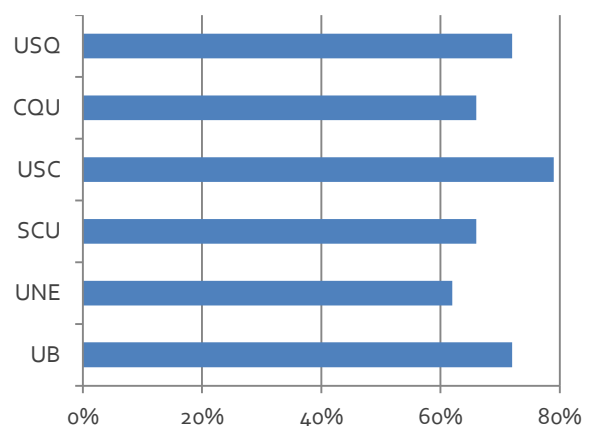
## Other impacts

The second part of the report examines additional economic benefits that result from the presence of a university in a local region in terms of human capital. The presence of graduates in a region generally contributes higher wages and lower unemployment rates as well as contributing to an educated workforce. When graduates of a university are employed regionally, the university is making a specific contribution in terms of human capital. This section summarises where RUN graduates are initially employed with particular focus on regional employment.

### Initial employment location of RUN Bachelor level graduates

The Graduate Careers Survey undertaken by the Graduate Careers Council collects the employment location of a graduate approximately four months after graduation. Data provided by each individual University, between 2007 and 2011, indicates that a significant proportion of graduates with Bachelor level qualifications, that were employed four months after graduation, were initially employed in a regional location. This is shown in the chart below.

Percentage of Bachelor level graduates that were employed in a regional location at the survey census date, 2007-2011.



Overall, a large percentage of Bachelor level graduates of RUN are initially employed in regional Australia, with all member Universities reporting over 60% initial employment in a regional location.

# Regional Universities Network

## Proportion of the population with a post-school qualification

Between the 2006 and 2011 Census periods, the proportion of the population aged over 15 years, with a university qualification increased in the all LGAs in which the Universities in RUN are located. This is shown in the table below.

### Total university qualifications as a percentage of the population aged over 15 years 2006 and 2011 Census.

University	LGA	Total university qualifications		
		2006	2011	Difference
UB	Ballarat	17.6%	19.6%	2.0%
UB	Horsham	12.8%	14.0%	1.2%
USC	Sunshine Coast	14.7%	17.1%	2.4%
USQ	Toowoomba	16.7%	16.9%	0.2%
USQ	Ipswich	10.1%	12.1%	2.0%
USQ	Fraser Coast	8.9%	10.3%	1.4%
CQU	Rockhampton	14.1%	14.4%	0.3%
CQU	Mackay	11.3%	11.8%	0.5%
CQU	Gladstone	11.4%	12.2%	0.7%
CQU	Bundaberg	9.4%	11.0%	1.6%
SCU	Lismore	16.8%	18.6%	1.9%
SCU	Coffs Harbour	13.1%	15.6%	2.6%
SCU	Gold Coast-Tweed	14.3%	17.2%	2.9%
UNE	Armidale-Dumaresq	24.9%	27.5%	2.5%

Source: ABS Census of Population and Housing 2006-2011

In 2011, the proportion of the population aged over 15 years with a university qualification ranged from 27.5 per cent in Armidale-Dumaresq LGA to 10.3 per cent in Fraser Coast LGA. The largest increase between the 2006 and 2011 Census period was recorded in the combined Gold Coast-Tweed LGA (2.9 per cent).

## Income levels by qualification

Based on data from the 2011 Census for all LGAs in which RUN is located, persons in the workforce holding a university qualification generally command significantly higher incomes from employment than the average for the workforce as a whole. This is summarised in the table across.

## Average income for employed persons with a university qualification as a proportion of persons with no post school qualification.

		Master Degree Level	Graduate Diploma Level	Bachelor Degree Level
UB	Ballarat	1.53	1.60	1.45
UB	Horsham	1.64	1.99	1.75
USC	Sunshine Coast	1.51	1.57	1.40
USQ	Toowoomba	1.51	1.41	1.54
USQ	Ipswich	1.53	1.43	1.48
USQ	Fraser Coast	1.65	1.62	1.60
CQU	Rockhampton	1.51	1.54	1.52
CQU	Mackay	1.42	1.48	1.45
CQU	Gladstone	1.43	1.39	1.30
CQU	Bundaberg	1.69	1.94	1.61
SCU	Lismore	1.64	1.69	1.63
SCU	Coffs-Harbour	1.67	1.91	1.66
SCU	Gold Coast-Tweed	1.42	1.35	1.43
UNE	Armidale-Dumaresq	1.46	1.47	1.43

Source: ABS Census of Population and Housing 2006-2011

For those with a Bachelor level qualification, average incomes in all LGAs with a RUN campus were between 1.30 and 1.75 times higher than the average income for the workforce overall. A similar result is also shown for Graduate Diploma level qualifications as well as Masters level.

## Unemployment rate and post-school qualifications

An analysis of the unemployment rates for the LGAs in which RUN is located, at the 2011 Census, shows that the average unemployment rate for persons with a university qualification is considerably lower than the overall unemployment. This is shown in the table overleaf.

## Economic Impact

As expected, the unemployment rate amongst those people with no post-school qualifications is also considerably higher than for those with a university qualification and for the workforce overall.

higher incomes and have lower unemployment rates than people with no university qualifications. These results would indicate that RUN has a significant impact on the human capital in regional Australia.

### Unemployment rate by post-school qualification, 2011

		University qualification	No post-school qualification	Total region
UB	Ballarat	2.9%	8.2%	5.9%
UB	Horsham	1.2%	5.1%	3.7%
USC	Sunshine Coast	3.8%	9.3%	7.1%
USQ	Toowoomba	2.4%	6.4%	4.8%
USQ	Ipswich	3.1%	9.5%	7.3%
USQ	Fraser Coast	3.2%	13.7%	10.5%
CQU	Rockhampton	2.3%	6.8%	5.2%
CQU	Mackay	1.9%	5.1%	3.7%
CQU	Gladstone	2.2%	6.3%	4.6%
CQU	Bundaberg	2.7%	11.3%	9.0%
SCU	Lismore	4.5%	10.8%	8.3%
SCU	Coffs Harbour	3.4%	11.7%	8.3%
SCU	Gold Coast - Tweed	4.4%	9.7%	7.6%
UNE	Armidale-Dumaresq	1.2%	12.0%	7.4%

Source: ABS Census of Population and Housing 2006-2011

### Summary

Overall, the LGAs that accommodate a University in RUN have shown an increase in the proportion of the population with a university qualification between the 2006 and 2011 Census periods. Whilst not all of the local community would have received their qualification from RUN, the initial location of the graduates from RUN would indicate that a large proportion is retained in regional Australia.

Additionally, 2011 Census data also shows that university graduates in RUN LGAs, on average, earn



Lesley Arthur:  
lesley@redeconsult.com.au

Kathy Sloan:  
kathy@redeconsult.com.au